

TULA® DUAL

Trans Urethral Laser Ablation of Recurring Bladder Tumors



- The real ambulatory care
- Quick, safe and easy
- TULA® outpatient procedure with DUAL wavelength
- Excellent vaporization and hemostasis
- Management of high-risk patients

TULA® DUAL – DUAL Laser Technology

Staying true to its tradition in pioneering new minimally invasive treatments, biolitec® combines DUAL wavelengths of 980 nm / 1470 nm to provide excellent and efficient intra and post-operative results. Dual diode lasers with high quality fiber optics make procedures safe and cost effective for both healthcare professionals and patients.



The impact of Bladder Cancer

9th

most commonly
diagnosed cancer
in the world

5th

most common
cancer in Europe

1,9 mio

people live with bladder
cancer worldwide

75%

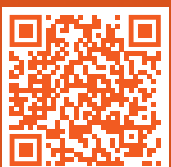
of all urothelial bladder
tumores are NMIBC

4,9 billion EUR

one of the highest life time cost

>570K

new cases per year



TULA® DUAL
Animation

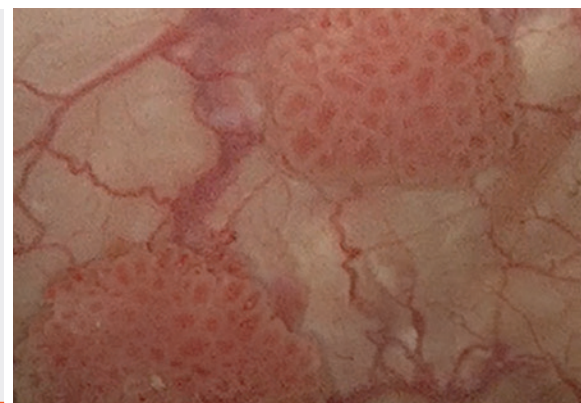
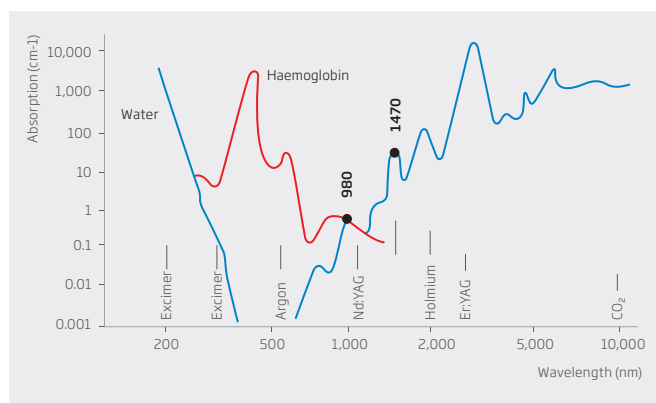
Non muscle invasive bladder tumors NMIBC

Non-muscle invasive bladder tumor normally has a high recurrence rate, leading to multiple treatments. Elderly patients with multiple morbidities are not fit for conventional treatment under general anesthesia. TULA® DUAL offers a technique using flexible cystoscopy for the treatment of bladder tumor under local or even no anesthesia in outpatient settings.

The TULA® slim fiber allows for greater scope flexibility essential for bladder neck procedures on the J manouvre with flexible cystoscopes. This is particular helpful when a middle lobe is present limiting scope deflection. It is also useful for hard-to-reach lower pole UUT TCC using flexible ureterorenoscopes.

Advantages:

- Avoidance of the obturator-nerve reflex
- Specially designed fibers for best visibility
- Controlled and focussed penetration depth with less thermal spread
- Atraumatic fiber tip enables a smooth insertion and protects the working channel
- Dual concept for a matched penetration depth of tumor
- A non-anesthetic office procedure
- compatible with single and re-useable cystoscopes
- non-inferior to TURBT
- Hexagonal fiber core for homogeneous treatment
- A resource and cost efficient procedure
- Ability to treat anti coagulated patients
- Low pain scores so excellent tolerability



LEONARDO® DUAL with specially designed fibers combines the wavelengths of 980 nm and 1470 nm with high absorption in water and hemoglobin



LEONARDO®

Model	LEONARDO® Mini Dual
REF	SL980+1470 nm 16 W
Power / Wavelength	11 W (980 nm) / 5 W (1470 nm)
Fiber diameter	≥ 360 µm
Aiming beam	635 nm, max. 4 mW
Treatment mode	CW, pulse mode
Pulse duration / -break	0.01 – 180 sec / 0.01 – 180 sec
Power supply	110 – 240 VAC, 50 – 60 Hz (12 VDC @ 100 W)
Batteries	Li-ion batteries
Dimensions (H x W x D)	6 cm x 9 cm x 21.5 cm
Weight	900 g

Fiber

REF	Product	PU	length [m]
503100410	TULA® Fiber, IC	10	3.0
503200329	Megabeam HBFSF 272-365, Spherical tip, IC (TULA® slim Fiber)	10	3.0

Kit

503100415	TULA® Kit, IC
-----------	---------------

Accessories

AB5801	TULA® biopsy Forceps single use 1.8x1200mm sterile *
AB5815	Push TULA® Y connector *

* in kit included

Contact us

to learn more about a whole new world
of minimally invasive laser therapies



biolitec® worldwide

biolitec Holding GmbH & Co KG

Vienna, Austria
phone: +43 1 3619 909 50
info@biolitec.de
www.biolitec.com

biolitec biomedical technology GmbH

Jena, Germany
Phone: +49 3641 519 53 0

biolitec Schweiz GmbH

Wollerau, Switzerland
Phone: +41 55 555 30 20

biolitec España

Madrid, Spain
Phone: +34 91 9910857

biolitec Italia SRL

Milano, Italy
Phone: +39 02 8423 0633

biolitec Tıbbi Cihazları Ltd. Şti.

Istanbul, Turkey
Phone: +90 216 574 7456

OOO biolitec Spb

Saint-Petersburg, Russia
Phone: +7 812 4493752

biolitec FZ LLC

Dubai, UAE
Phone: +971 44 29 85 92

biolitec laser science and technology Shanghai Ltd.

Shanghai, China
Phone: +86 21 6308 8856

biolitec Sdn. Bhd.

Selangor, Malaysia
Phone: +60 3 5569 7158

biolitec India Private Ltd.

Bangalore, India
Phone: +91 93275 11005

PT. Biolitec

Tangerang, Indonesia
Phone: +62 21 295 57 419

biolitec Korea Ltd.

Seoul, Republic of Korea
Phone: +82 2 701 4707

Equipos Laser de Uso Médico y Fibra Óptica SA de CV

(Biolitec Mexico & Latín América)
Phone: +52 (55) 5573 1800

Biolitec Biotecnologia Comércio, Importação, Exportação LTDA

São Paulo, Brazil
Phone: +55 11 2093 8602

CeramOptec GmbH

Bonn, Germany
Phone: +49 228 979670

Ceram Optec SIA

Rīga, Latvia
Phone: +371 653 25 994



All fibers are free of latex and DEHP. Our fibers are single use products (unless otherwise indicated) delivered sterile for immediate use.

Imprint

biolitec Holding GmbH & Co KG
Untere Viaduktgasse 6/9
A-1030 Wien
Phone: +43 1 3619 909 50
www.biolitec.com